

Component wise guidelines for Centrally Sponsored Schemes/Central Sector Schemes as prescribed by Central Silk Board (CSB) Bangalore for the year 2019-20

1. Support for Development of Kisan Nurseries:-

Scheme	Unit Cost (Rs. In Lakhs)	Sharing Pattern %			Funding Pattern (Rs. In Lakhs)		
		CSB	State	Beneficiary Contribution	CSB	State	Beneficiary Contribution
General Category	1.50 Per Acre	50%	25%	25%	0.75	0.375	0.375
SCSP/TSP		65%	25%	10%	0.975	0.375	0.15

- For effective plantation and to increase the survivability of plants, raising of Nurseries is very much useful than plantation through cutting .Hence it is proposed to establish Kissan Nurseries for expansion of Mulberry.
- In (01) Acre area, 1,60,000 Nos and above of Mulberry cuttings are to be planted to raise at least 1,28,000 Nos. of Saplings and to be supplied to the farmers
- The farmer while supplying Saplings priority to be given to the local farmers / within the district, if farmers are not available should be supplied to other district farmers in consultation with the Liaison Officer of Sericulture Sector and DHSO concerned
- the farmer should sell healthy saplings @ Rs.2/- per sapling
- the State Share will be released subject to sanction of funds from State Government. The central share is now released since the farmers have agreed to bear State share portion in addition to his/her beneficiary contribution.
- The DHSO should release the funds in consultation with the Liaison Officer for Sericulture Sector of concerned district and maintain records while grounding the scheme .
- The funds released under this component should not be utilized for any other component or for any other purpose
- The records should be presented during internal /CSB audit without fail

2. Support for Mulberry Plantation Development- Rising of High Yielding Varieties:-

Scheme	Unit Cost (Rs. In Lakhs)	Sharing Pattern %			Funding Pattern (Rs. In Lakhs)		
		CSB	State	Beneficiary Contribution	CSB	State	Beneficiary Contribution
General Category	0.50 Per Acre	50%	25%	25%	0.25	0.125	0.125
SCSP/TSP		65%	25%	10%	0.325	0.125	0.05

- Field staff shall identify the potential farmers who have better water sources randomly inspected by concerned DHSO/Liaison Officers.
- Towards area expansion and quick replacement of old and Low yielding varieties at farmers level for increasing the production and productivity
- It is a must 5000-5500 Nos. of saplings to be transplanted in (01) Acre land
- Item wise funds break up is enclosed here with for ready reference
- State Share will be released subject to sanction from State Government. The central share is now released since the farmers have agreed to bear State share portion in addition to his/her beneficiary contribution.
- The DHSO should release the funds in consultation with the Liaison Officer for Sericulture Sector of concerned district and maintain records while grounding the scheme.
- The funds released under this component should not be utilized for any other component or for any other purpose
- The records should be presented during internal /CSB audit without fail

3. Assistance for Construction Rearing Houses Model – I 1000 Sqft. :-

Scheme	Unit Cost (Rs. In Lakhs)	Sharing Pattern %			Funding Pattern (Rs. In Lakhs)		
		CSB	State	Beneficiary Contribution	CSB	State	Beneficiary Contribution
General Category	4.00	50%	25%	25%	2.00	1.00	1.00
SCSP/TSP		65%	25%	10%	2.60	1.00	0.40

As per the CDP norms the funds for construction of Rearing House to be released in the following pattern.

Scheme	Stage of construction	Total Central Share portion (Rs.in lakhs)	Total State Share portion(if sanctioned by the State Govt.(Rs.in Lakhs)	State wise funds to be released per farmer		
				% of fund	Central Share to be released (Rs.in lakhs)	State Share to be released(if sanctioned by the State Govt.(Rs.in Lakhs)
General Category	Basement	2.00	1.00	15%	0.30	0.15
	Lintel level			25%	0.50	0.25
	Roof level			35%	0.70	0.35
	Completion			25%	0.50	0.25
				Total	2.00	1.00
SC Sub Plan/TSP	Basement level	2.60	1.00	15%	0.39	0.15
	Lintel level			25%	0.65	0.25
	Roof level			35%	0.91	0.35
	Completion			25%	0.65	0.25
				Total	2.60	1.00

- Since the subsidy amount is more than the Rs.1.00 lakh an agreement bond on Non-judicial bond paper of worth Rs.100/- should be obtained from the beneficiary, and be submitted to head Office in original by the concerned Liaison Officer / DHSO. The modal agreement format for this purpose is here with enclosed
- The DHSO/Liaison Officer should arrange to file / paste stage wise photographs of construction of Rearing House together with farmers in the CDP booklet in full shape and to be presented during audits and CSB Physical Verification

The Dimensions of the Shed:

- Length 50' X Width 20' X Height 15' in Centre and 12' at lintel level (wall).
- Cross Doors 1 Nos. with a size of Width 4' X Length 6'.
- Cross ventilators 24 Nos. with a size of Width 1' X Length 2'.
- Cross-windows 6 Nos. with a size of Width 3 'x'Length 4'
- The thickness of the wall shall be 9'' with cement plastering and Roof shall be covered with AC Sheets.
- Flooring shall be pucca like Kadapa stones or Cement flooring.
- Sunshades shall be provided all around the Shed.

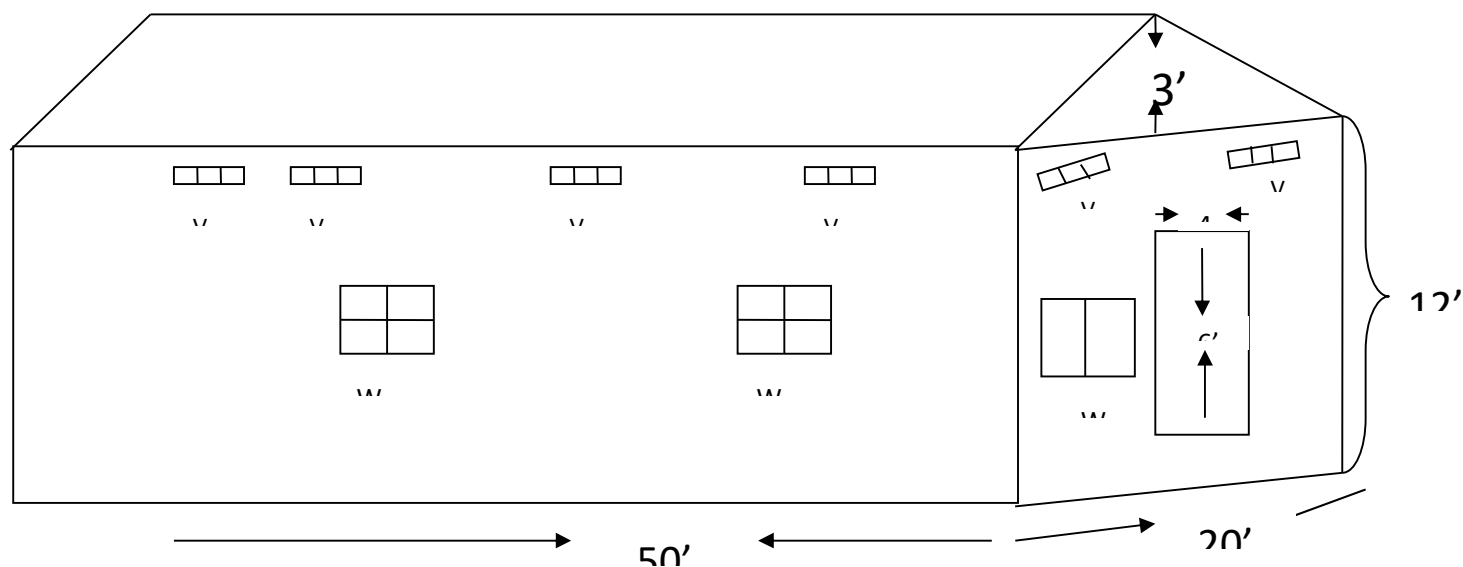
- **Sketch Map of Rearing Shed Type-I is here with enclosed. (Not according to the scale)**
- **DHSOs/Liaison Officers should arrange to fix permanent Display boards in front of the Rearing House with a dimension of 4Mtrs.Length X 3Mtrs. Width covering the details like Name of the farmer , Scheme under which sanctioned ,Total estimate of the component, Dimensions of the Rearing House Sharing pattern (CSB:State: Beneficiary Contribution & Subsidy sanctioned etc. Further geo tagging should be done for both Mulberry garden and Rearing House with the coordination of Horticulture Officers without fails.**
- **Model of the Display Board to be affixed in front of the rearing House is shown below for ready reference**



Government of Telangana
Department of Sericulture

1.	Title of the Project	Construction of Rearing House			
2.	Dimension of the Rearing House	50'x 20'x 15'			
3.	Project Details	Central Sector Schemes (Silk Samagra) 2019-20			
4.	Total Outlay of the Project (In Rs.)				
5.	Unit Cost (In Rs.)	Rs. 4,00,000/-			
6.	Name of the Farmer & Fathers Name and Contact No.				
7.	Location of the Project	State	District	Mandal	Village
8.	Source of Funds & Sharing Pattern of Rearing House amount (In Rs.)	Central Silk Board (50%) for General & 65% for SCSP & TSP	State (25%) General & 25% for SCSP & TSP	Beneficiary Contribution (25%) General & 10% for SCSP & TSP	Total
9.	Details of Varandah & Disinfection tank with dimensions				
10.	Any Other				
11.	Project Commenced year				

Sketch Map showing the Rearing Shed (Type I)



4. Supply of Rearing appliances including improved mountages (Rotary Mountages) for quality Cocoon Production

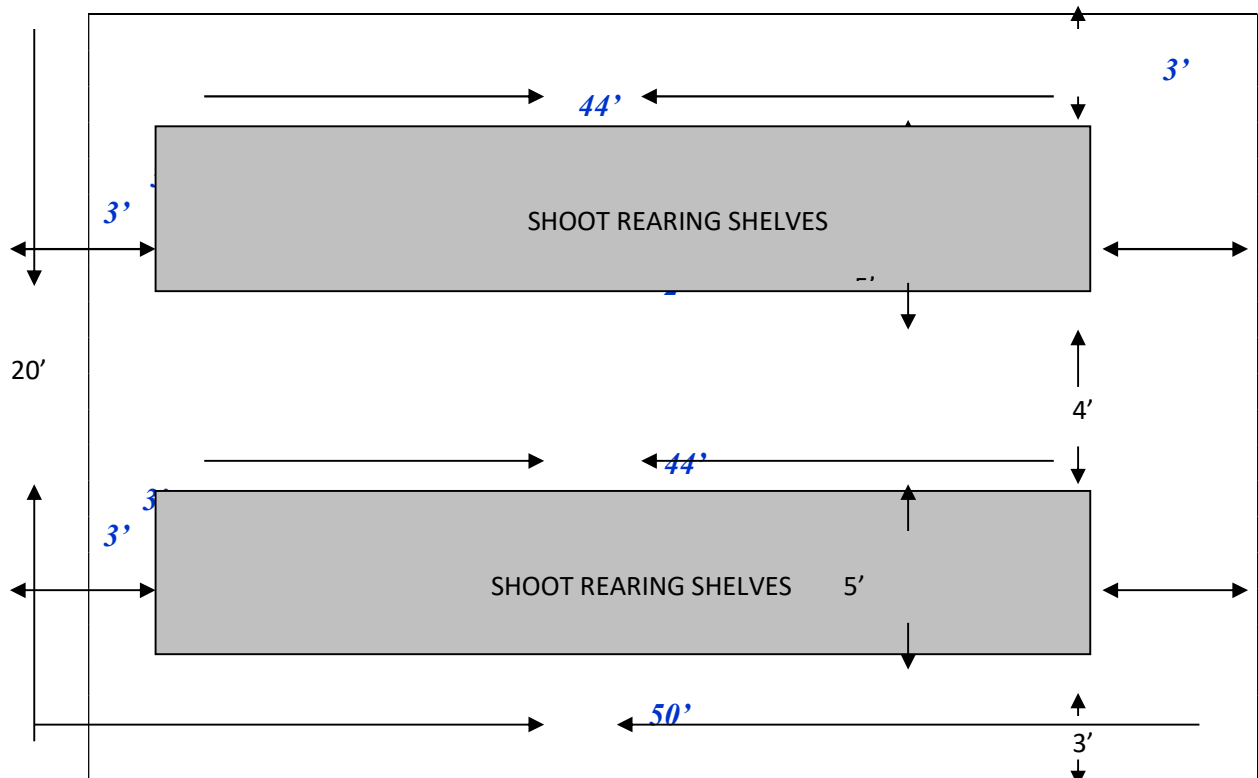
- To support the new Sericulturists with appropriate technologies through supply of a set of rearing and farm appliances to begin the silkworm rearing activity for production of quality Bivoltine cocoons with rotary mountages
- To supply quality Plastic Trays & Netrikas ie.. after shifting of SERIFED Hyderabad to Guntur after bifurcation of Telangana State DOS Hyderabad has called for sealed tenders and supplied 10 Plastic Trays and 300 Nos. Plastic Netrikas to each farmer up to the year 2018-19 on free of cost basis (ie.. @ Rs.501/- per Tray and Rs.56.78 per Netrika totalling to a worth of Rs.22,044/-)
- During the current year 2019-20 the CSB has sanctioned Central funds under Silk Samagra but due to availability of previous supplied stock at stock points it is decided to allot the available stock to the farmers

covered during 2019-20 on free of cost basis and since central subsidy is sufficient towards cost of 10 Trays and 300 Netrikas and remaining subsidy amount will be released on submission of specific proposals from the district officers from this office for installation of Shoot feeding stand and purchase of farm appliances

- In Funding pattern the State Share portion will be released subject to sanction from State Government. The central share is now released since the farmers have agreed to bear State share portion in addition to his/her beneficiary contribution.
- The DHSO should release the funds in consultation with the Liaison Officer of Sericulture Sector of concerned district and maintain records while grounding the scheme.
- This component funds should not be utilized for any other purpose
- The records should be presented during internal /CSB audit without fail

5. Sketch Map of Shoot Feeding Shelves in Rearing Shed 1000 Sqft.

- (Type I)



6. Prophylactic measures (Includes quality disinfectants,Inputs supply for productivity improvement) support to CBOs.

- Taking up of prophylactic measures ie.. supply of quality disinfectant, inputs supply for direct transfer of technologies to the field and productivity improvement.
- To supply quality Disinfectants ie.. after shifting of SERIFED Hyderabad to Guntur after bifurcation of Telangana State DOS Hyderabad has called for sealed tenders and supplied Quality disinfectants to each farmer up to the year 2018-19 of worth Rs.5000/- on 50% subsidy basis (and supplied 50Kgs Bleaching powder,100 Kgs Slaked lime, 600 gms Asthra @ 100 gms per packet, 02 litres Poshan, 38 Kgs of Vijetha Golg/Supplement 200 gms of SERIFIT to each farmer)
- During the current year 2019-20 the CSB has sanctioned Central funds for purchase of Disinfectants under Silk Samagra but due availability of previous supplied stock at stock points it is decided to allot the available stock to the farmers covered during 2019-20 by replacing the date barred Vijetha, Pohan, & Asthra on 50% cost basis.
- Since some of the district officers have not submitted the half margin sent from this office about left over stock particulars this office could not arrange for re allotment of Disinfectants to the farmers covered under Silk Samagra 2019-20.
- In Funding pattern the State Share portion will be released subject to sanction from State Government. The central share is now released since the farmers have agreed to bear State share portion in addition to his/her beneficiary contribution.
- The DHSO should release the funds in consultation with the Liaison Officer of Sericulture Sector of concerned district and maintain records while grounding the scheme.
- This component funds should not be utilized for any other purpose
- The records should be presented during internal /CSB audit without fail